



Computational Materiality for Sustainable Architectures and Comprehensive Skins

TACCUINO

From arabic taquîm to mean "orderly arrangement" that identified a calendar or an almanac.

ASSIGNMENT GUIDE 02

PERSONAL TACCUINO FOR PROPOSAL

TACCUINO

Support for collecting notes (notebook), sketches and drawings (sketchbook), clippings and articles (scrapbook). Collection of ideas, thoughts and elements (patchwork) not necessarily ordered, but collected in chronological order.

Cover.
Notes of Charles Darwin, 1809-1882

In this page
above: Lebbeus Woods, Four Sketch-
books, 1998-2000

right: sketchbook by Vincent Van Gogh,
1853-1890



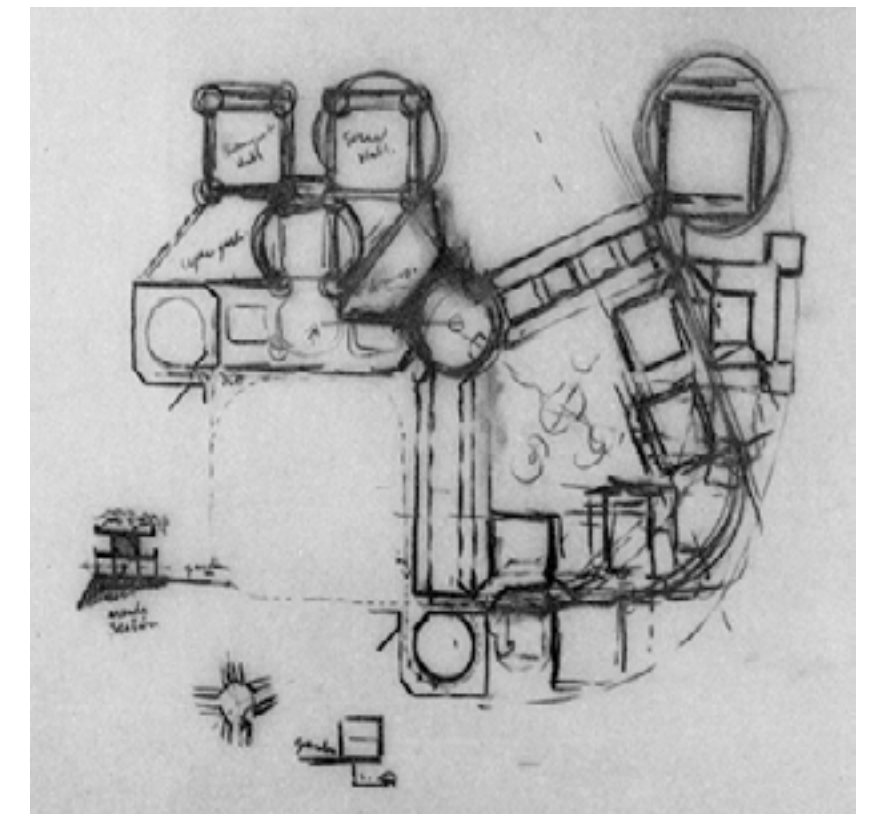
[2]



above: Lebbeus Woods, Four Sketch-
books, 1998-2000

below sketch by Louis Kahn 1905-2002

This assignment aims to stimulate a personal research in order to define a preliminary architectural proposal to be presented and discussed.



[3]

What to do

To carry out this exercise each student, individually or in small group, is required to provide some proposal as alternatives to discuss in classroom concerning the following aspects:

- 1) **site & place analysis** as a synthesis of the "Architectural design" module activity
- 2) **space program and lay-out organization.**
- 3) **conceptual mass optioneering** with environmental motivations as a synthesis of the "Environmental Control Techniques" module activity
- 4) the **envelope design proposal** as a specific contribution of the "Environmental Design" module.

How to do

In order to deliver the assignment students are required to produce a synthesis of their work developed in the other teaching modules and a research devoted to define a proposal for the building envelope that represents the specific topic of the Environmental Design teaching module.

In detail, for the Envelope Design Proposal students are required to maintain a personal taccuino where to gather ideas, suggestions and any useful materials to support the development of their proposal. It could contain photos, hand sketches, pages from magazines, pics and texts from the web, photocopies and print outs with personal notes and commentaries through which they can give evidence of their learning process and conceptual references.

It is important that conceptual mass and building envelope proposals are developed taking in consideration some of the following topics:

- double skin facades and sun screen devices
- double roof and pergolas
- massive wall or other device for thermal lag
- natural ventilation and/or other devices for stack effect
- patterning, tessellation & parametric design for facades
- classroom daylight and quality of illumination

Outcomes & Evaluation

Students are asked to submit the following documents:

- n°1 sheet in UNI A1 format (vertical pagination) for the Program
- n°1 sheet in UNI A1 format (vertical pagination) for the Mass Optioneering
- n°1 sheet in UNI A1 format (vertical pagination) for the Envelope Proposal
- n°1 brochure in UNI A4 format (vertical pagination) for the Envelope Proposal research.

Evaluations will take place in the form of a poster pin-up presentation in classroom.



References

1) site & place analysis

http://www.mailab.biz/wp-content/uploads/2016/11/ASS01_Guide_PLACE-2016-17.pdf

2) space program and lay-out organization.

http://www.mailab.biz/wp-content/uploads/2016/11/CREDIT-02-Guide_BRIEF-2016-17.pdf

3) conceptual mass optioneering

Resources and Textbooks on Mailab's web page «Environmental Design Lab» and mainly:

<https://issuu.com/artichoc/stacks/e9c428624cfb4c148f0055371df06620>

4) the envelope design proposal

https://it.pinterest.com/mailab_/

main boards:
PATTERN | TESSELLATION | PARAMETRIC
GREEN SKINS
DOUBLE ROOFS & PERGOLAS
ENVIRONMENTAL DESIGN

